



DIGITAL PORTFOLIO

Jose R. Guerrero

Photographer: Jose Guerrero
Tools used: Mavic 2 Pro Drone, Adobe Lightroom

About Me

My commitment to public service began when I enlisted in the military at age 17. Following a service connected disability and an honorable discharge, I earned my B.A. in Graphic Design and have been utilizing my skills to empower disadvantaged communities ever since.

About the Project

The rebellious tone of this 18 x 24" poster project was influenced by our Youth Advocacy Council to reflect 2016 socio-political happenings that would affect the disability community in a very negative way.

Designer & Art Director: Jose Guerrero
Tools Used: Adobe Photoshop, Adobe Illustrator
Sample Type: Professional Work
Date of Completion: 2017
Time Spent (Including Rev Cycles): ~4 Weeks



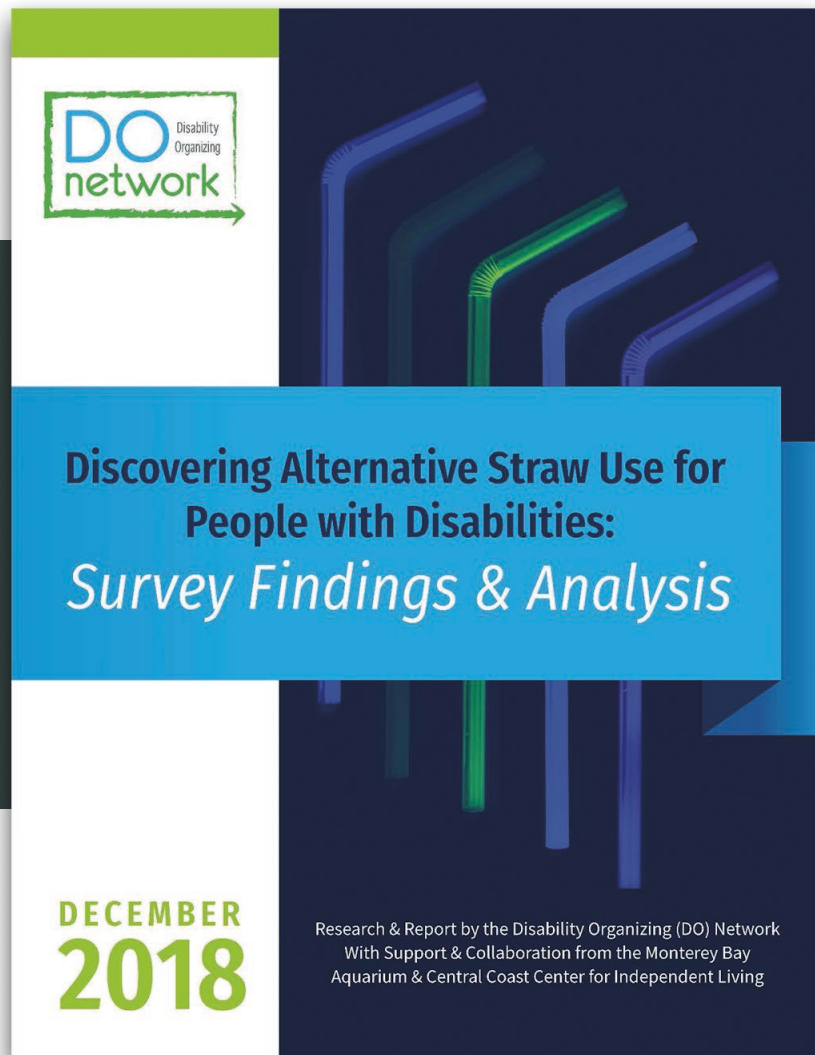


Straw Impact Report

A saddle bound booklet designed with both print and digital accessibility in mind.

[\[Click to download the PDF\]](#)

Designer: Jose Guerrero
Tools Used: Adobe Photoshop, Adobe Illustrator,
Adobe InDesign, Adobe Acrobat, JAWS
Sample Type: Professional Work
Date of Completion: 2019
Time Spent (Including Rev Cycles): ~2 Weeks



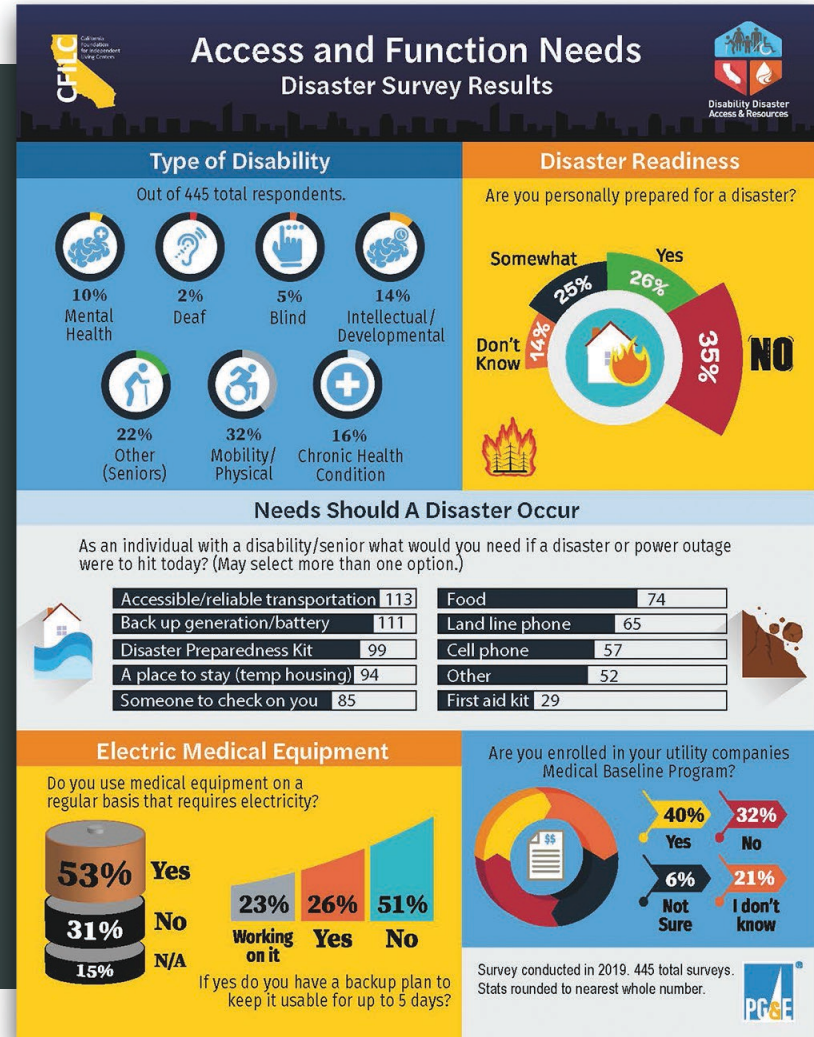
Disaster Readiness Infographic

Survey results converted into an eye catching infographic and optimized for electronic accessibility. [Click to download the PDF]



Art Director: Kyla Aquino Irving
Designer: Jose Guerrero

Tools Used: Adobe Illustrator, Adobe Acrobat, JAWS
Sample Type: Professional Work
Date of Completion: 2020
Time Spent (Including Rev Cycles): ~5 Days





Disability Counts!

#DisabilityCounts2020

Census Day is April 1st, 2020!



WHAT IS THE CENSUS?

The United States Census counts the country's population every decade. The collection of data about who lives in the United States and where is important for electoral representation, health care, housing, and education.

The next Census is in 2020. For the first time in history, you will be able to take the survey online or on paper.



WHY IS THE CENSUS IMPORTANT TO PEOPLE WITH DISABILITIES?

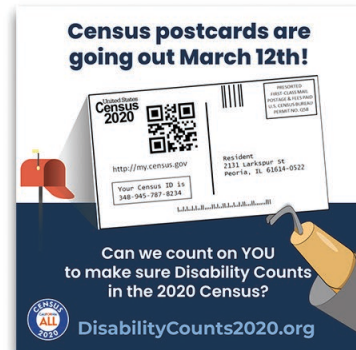
People with disabilities make up 26% of the US population (nearly 1 in 4), however barriers to participation in the Census have made it difficult to provide an accurate count.

When people with disabilities have not been able to participate in the Census, we are not counted accurately. This leads to a lack of funding of important services for disabled people.

Many social service programs such as special education and disability services that assist people in becoming or maintaining their independence rely on Census survey data.



GET COUNTED!



Disability Counts! 2020 Census Campaign

To encourage census participation among older adults and the disability community, a multi-faceted approach was taken. This included accessible fact sheets, tailored social media graphics, postcards, e-blasts, and more... in multiple languages!

Art Director: Kyla Aquino Irving

Designer: Jose Guerrero

Tools used: Adobe Photoshop, Adobe Illustrator,

Adobe Acrobat, JAWS, Canva.com

Sample Type: Professional Work

Date of Completion: 2020

[Click to download the PDF]



Logo Designer, Web Designer & Developer: Jose Guerrero
Tools Used: WordPress CMS, Google Dev Console, Adobe Photoshop
Sample Type: Professional Work
Date of Completion: 2020
Time Spent: ~2 Months

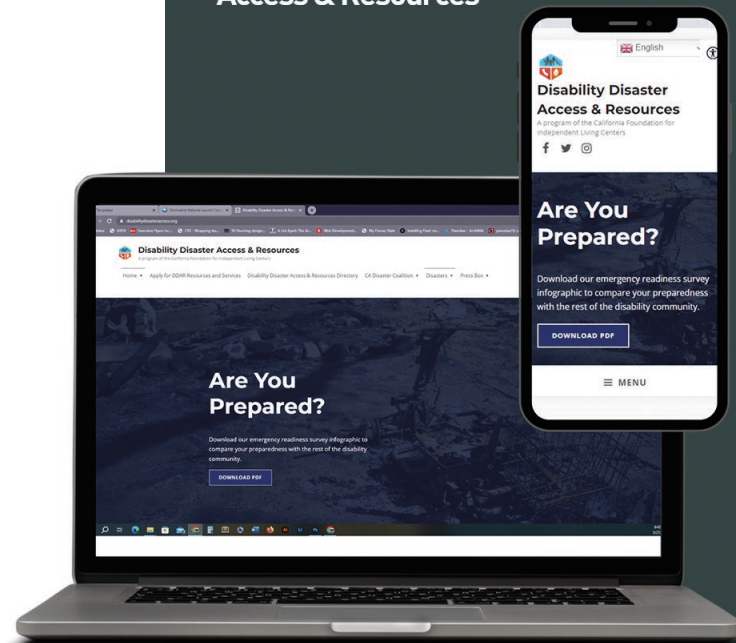
Disability Disaster Access And Resources

<https://disabilitydisasteraccess.org>

We built a program from the ground up to aid individuals with disabilities in accessing emergency services during natural disasters. It was critical to develop a dependable, quick and easy-to-use website. With a Google Lighthouse accessibility rating of 98+ on most pages, this website surpassed the WCAG 2.1 AA and Section 508 standards at the time of launch.

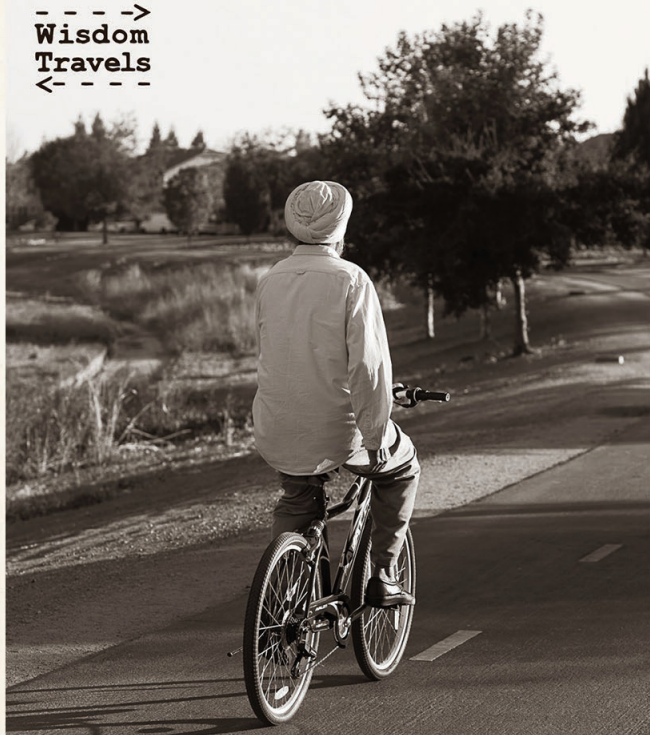


Disability Disaster
Access & Resources



An art project about stories of movement,
told by elders of North Natomas.

-->
**Wisdom
Travels**
<---



Submit stories from Jan 1st - Feb 28th, 2021

jibe.org/wisdomtravels

This project welcomes stories in all languages.



Janine Mapurunga
Artist in Residence
City of Sacramento

Wisdom Travels Campaign

A vintage look ad campaign focusing on
older adults for Natomas Jibe and the City
of Sacramento to encourage the use of
sustainable transportation.

Photographer & Art Director: Janine Mapurunga
Ad & Logo Designer: Jose Guerrero
Tools Used: Adobe Photoshop, Adobe Illustrator
Sample Type: Professional Work
Date of Completion: 2021
Time Spent (Including Rev Cycles): ~ 1 Week



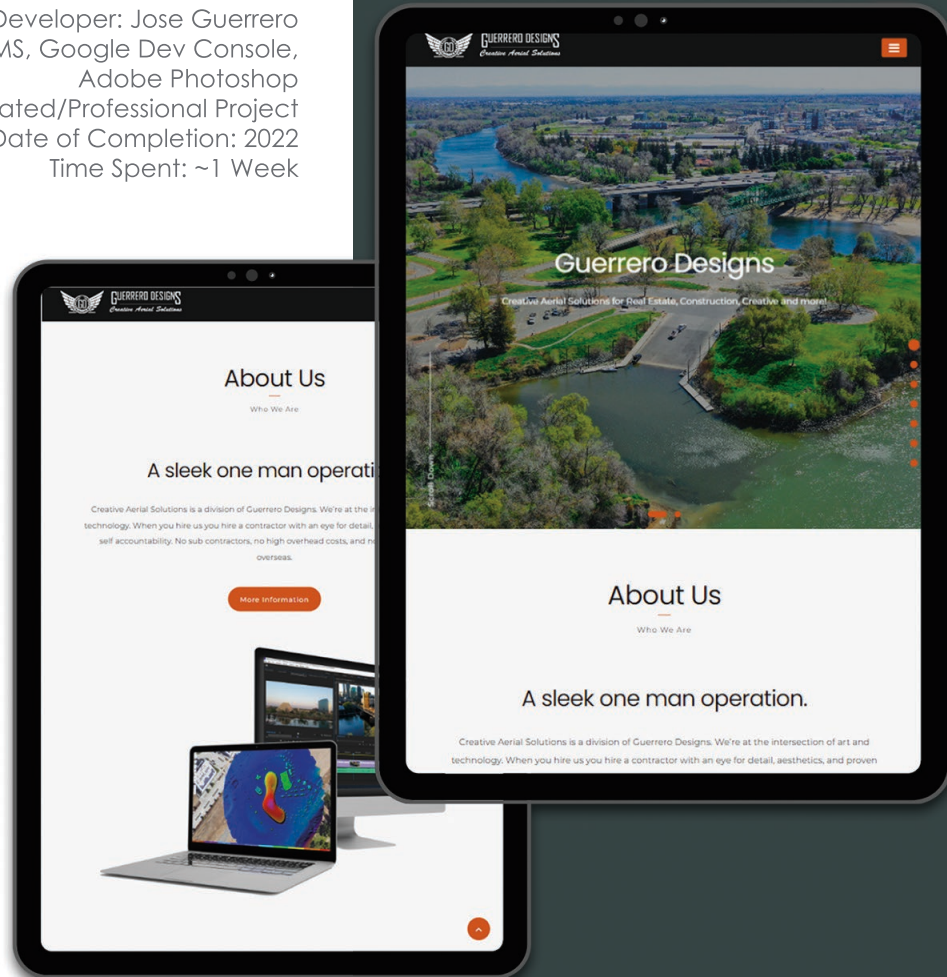


Web Designer & Developer: Jose Guerrero
Tools Used: Wordpress CMS, Google Dev Console,
Adobe Photoshop
Sample Type: Self-Initiated/Professional Project
Date of Completion: 2022
Time Spent: ~1 Week

GD: Creative Aerial Solutions Website

<https://fly.thegfxmech.com>

To overcome competition from established drone services in the region, who have cluttered websites, I utilized my skills in web design and development to create a streamlined and visually appealing website.





<https://theGFXmech.com>

Jose@thegfxmech.com